

Togo, Africa

Stabilizing Erosion

Shari Lossou-Lossavi, EC Nash Elementary, Tucson, AZ , Earth Camp for Educators, 2012

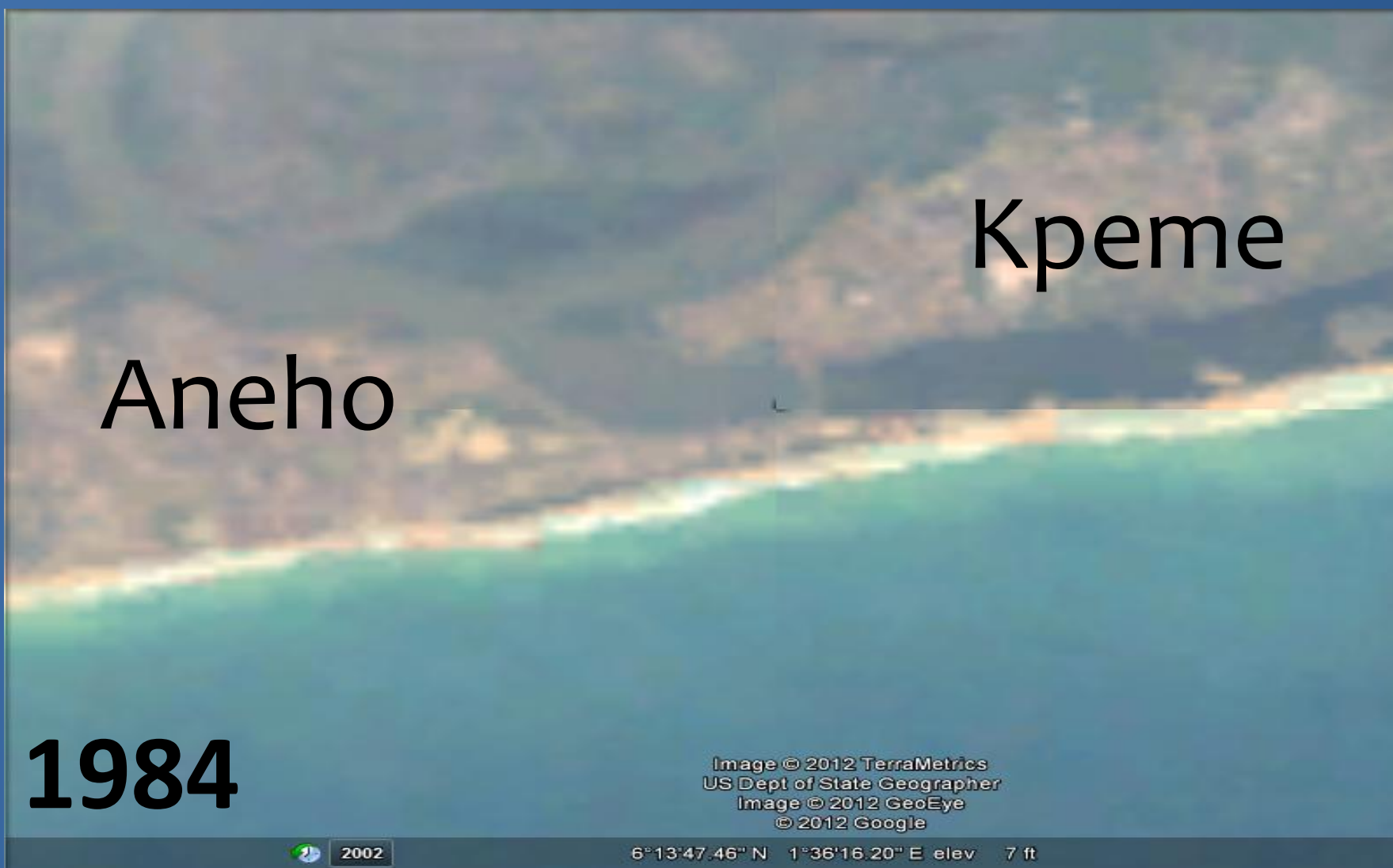


The Power of Perspective

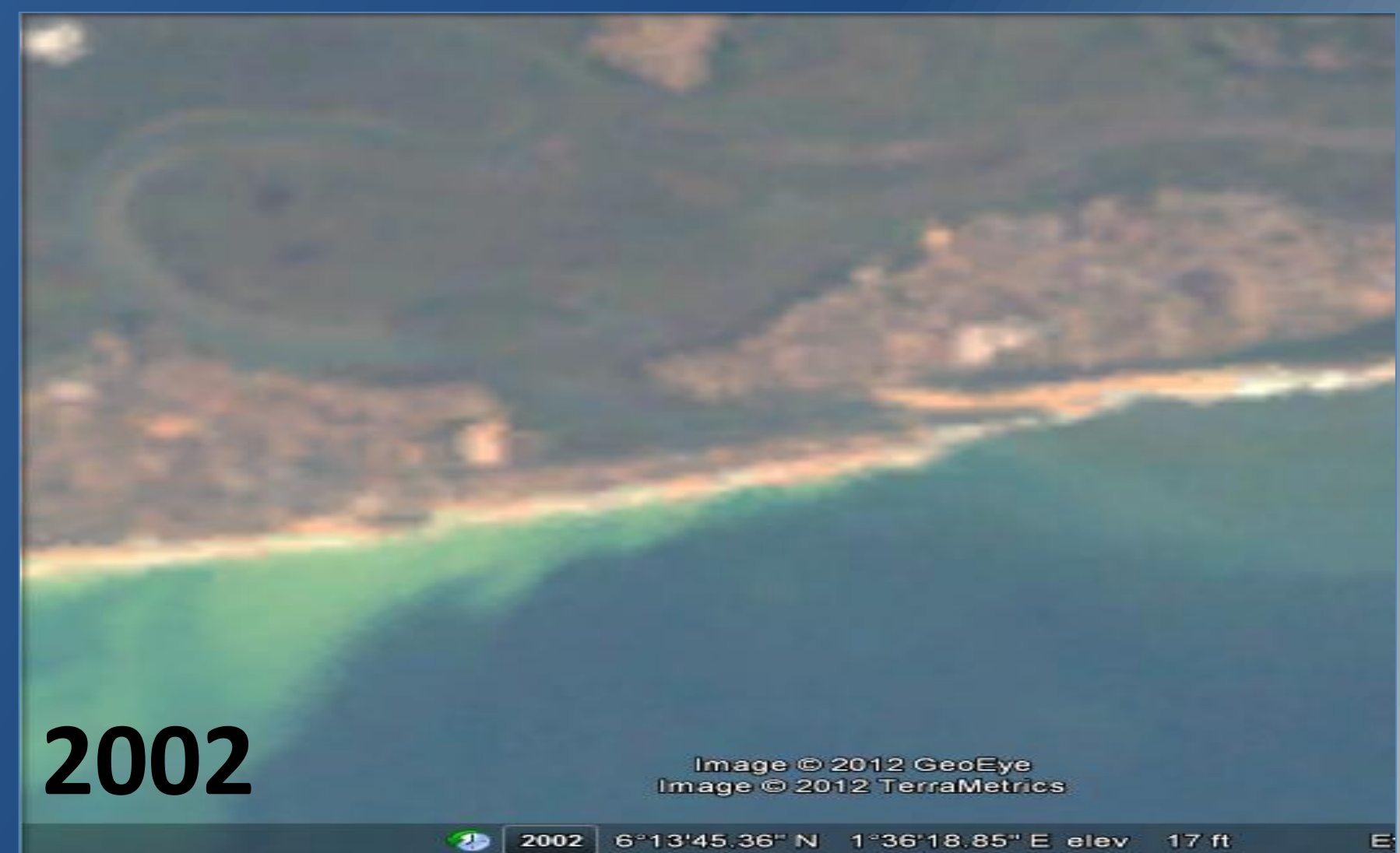
Artist's view of a U.S. Landsat satellite. Credits: NASA.

This is an awe-inspiring story of human ingenuity, as told to me by my husband, Guy Lossou, a Togolese native who did field work as a student on the following stabilization project.

Where is Togo?



In the mid-nineteen-eighties, sand erosion in the area of Aneho/Kpeme became noticeable and Department of Geography at the University of Benin was called on to come up with a solution. Erosion of the coastline posed an eminent economic threat to shipping and commerce in the region.



Stabilizing pillars were placed along the coast in 1987, with a 25-year projection to resolve the problem. Surprisingly, positive results were obtained within five years.



Aneho/Kpeme today: The coastline has been stabilized, and sand is accumulating instead of eroding.