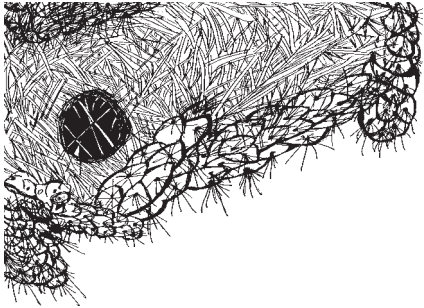


Homes:

Find a stick nest in a cactus.



Find a saguaro cactus with a hole in it.

What kind of animal would live here?

_screech owl, kestrel, elf owl, gila wood-pecker, gilded flicker, purple martin, etc. _



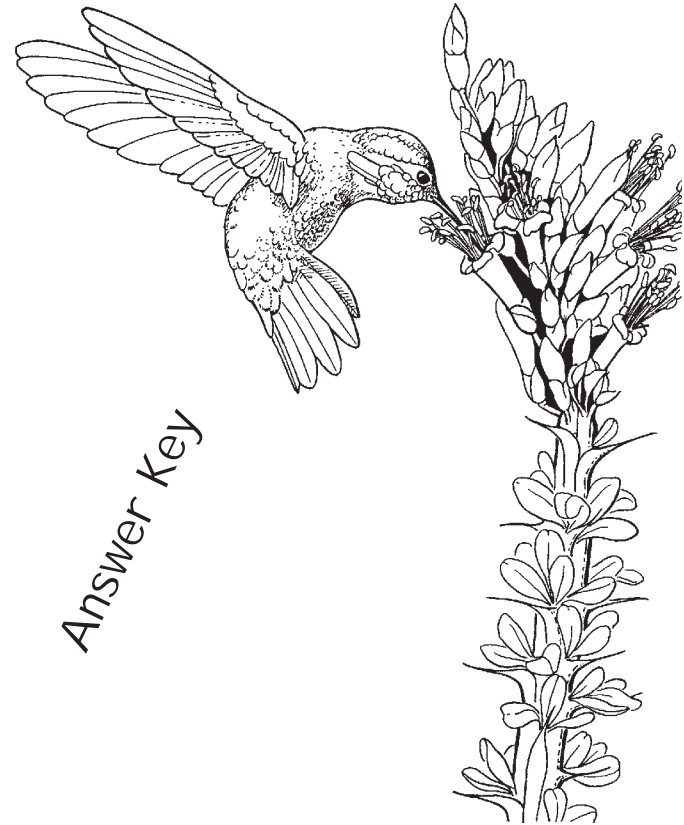
Animal Activity that Shapes the Environment:

Look for prairie dogs in the Desert Grassland. How do these animals help grassland plants and grassland habitat?

_____ They aerate soil, lend to species diversity by trimming grass and allowing other species of plants to grow, and eliminate shrub invasions into grasslands.



Plant & Animal Partners



Answer Key

This activity guide has information from our Plant and Animal Partners Desert Discovery Program and things you might find as you walk around the grounds that show plant and animal partnerships.



In our program, you will see many examples of partnerships in nature. Fill out the answers to the questions below as you discover them during the program.

PARTNERSHIPS THAT BENEFIT PLANTS

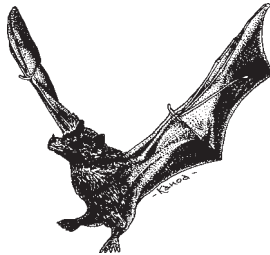
In some partnerships, animal activity benefits plants.

1. Animals that spread pollen from one flower to another are called (circle one):

A. seed spreaders

B. pollinators

C. nectators



2. How do pollinators help plants?

help them reproduce (make fruits with seeds)

3. You will meet examples of animals that help plants spread their seeds. List the animals you met and how they help plants do this.



Animal:

How It Spreads Seeds:

- desert tortoise (eats seeds and passes them intact through digestive system to "plant")
- ringtail or other mammal (spreads hitch-hiker seeds on fur)
- kangaroo rat (gathers seeds to eat, dropping some accidentally. Consumed seeds do not reproduce but accidentals can have a chance to sprout. Seed predation not seen as a benefit to the plant.)

Circle the partnership above that benefits both the animal and the plant.

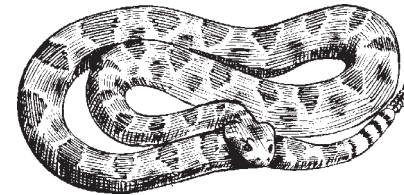
PARTNERSHIPS THAT BENEFIT ANIMALS

We've already seen how plant activity can benefit animals by providing food. Name another benefit animals gain from plants.

shelter

How might the activity of predators benefit plants?

It might reduce plant predators

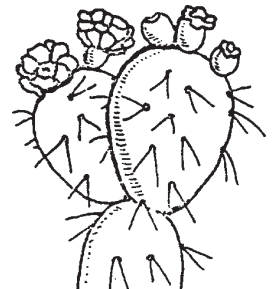


OTHER PLANT/ANIMAL PARTNERSHIPS

Look for some of these other types of partnerships as you walk around the museum. Answer the questions that relate to each.

Food:

Flowers provide sweet nectar for energy. Fruits have sweet pulp and nutritious seeds. Look for a plant with flowers or fruit.



Look for pollinators visiting flowers. What kind did you see?

various observations