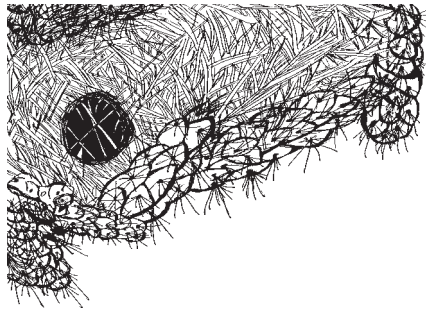


**Homes:**

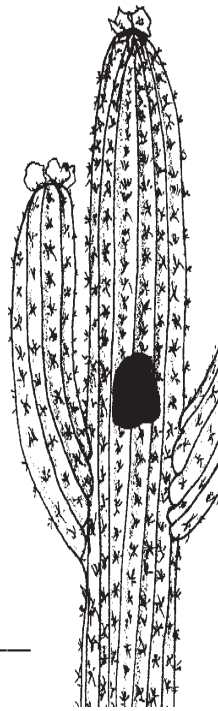
Find a stick nest in a cactus.



Find a saguaro cactus with a hole in it.

What kind of animal would live here?

---



**Animal Activity that Shapes the Environment:**

Look for prairie dogs in the Desert Grassland. How do these animals help grassland plants and grassland habitat?

---

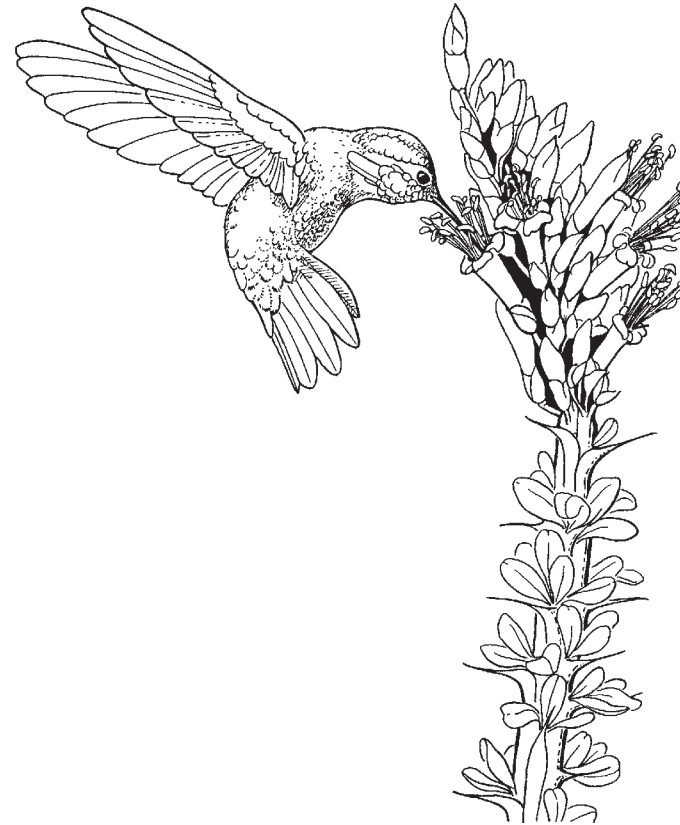
---

---

---



# Plant & Animal Partners



This activity guide has information from our Plant and Animal Partners Desert Discovery Program and things you might find as you walk around the grounds that show plant and animal partnerships.



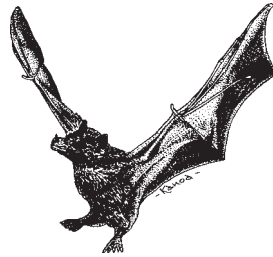
In our program, you will see many examples of partnerships in nature. Fill out the answers to the questions below as you discover them during the program.

### PARTNERSHIPS THAT BENEFIT PLANTS

In some partnerships, animal activity benefits plants.

1. Animals that spread pollen from one flower to another are called (circle one):

- A. seed spreaders
- B. pollinators
- C. nectators



2. How do pollinators help plants?

---

3. You will meet examples of animals that help plants spread their seeds. List the animals you met and how they help plants do this.



Animal:

How It Spreads Seeds:

---

---

Circle the partnership above that benefits both the animal and the plant.



### PARTNERSHIPS THAT BENEFIT ANIMALS

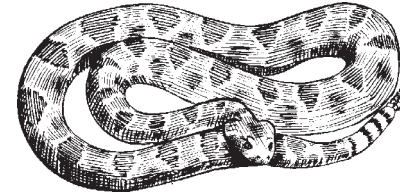
We've already seen how plant activity can benefit animals by providing food. Name another benefit animals gain from plants.

---

How might the activity of predators benefit plants?

---

---

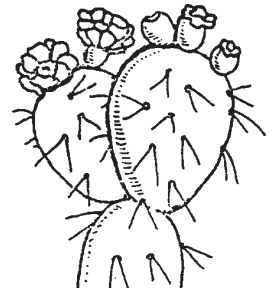


### OTHER PLANT/ANIMAL PARTNERSHIPS

Look for some of these other types of partnerships as you walk around the museum. Answer the questions that relate to each.

#### Food:

Flowers provide sweet nectar for energy. Fruits have sweet pulp and nutritious seeds. Look for a plant with flowers or fruit.



Look for pollinators visiting flowers. What kind did you see?

---